

AM35 Power Saving DC Tubular Motor Manual

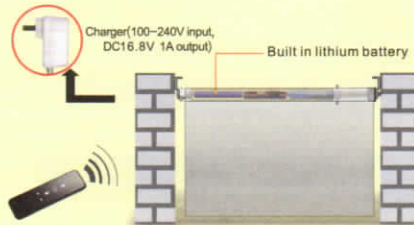


I. Main features

- Energy Saving patent design, available for connecting with external battery pole or solar panel.
- Self-checking and correction of brake offset.
- Electronic limit setting, enjoyable programmable 6 limits for option (2 ends limits and 4 middle limits).
- Over loading protection, over-charging & lower-charging protection.
- One fully charge could last 4-6 months with operation 1 minute a day.

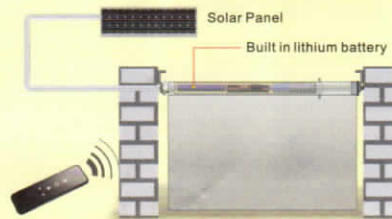
II. Applications

Application 1: Built-in Lithium Battery



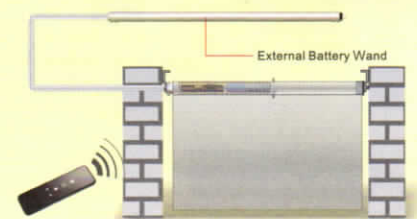
Please disconnect charger with the motor when its indicator light turn to green.

Application 2: Solar Panel Power



It takes 2 days to fulfill the battery in sunny day.

Application 3: Battery wand Power



III. Operation

1. Power ON/OFF function

* After switching off power, the motor wouldn't able to receive remote signals.

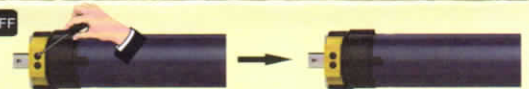
Switch Power ON



Pressing down and hold the PROG for 1s

Motor beep once and switch on power

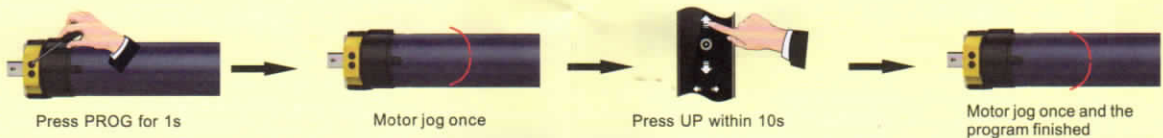
Switch Power OFF



Press PROG five times in every 1s. and the fifth time should hold for 3s

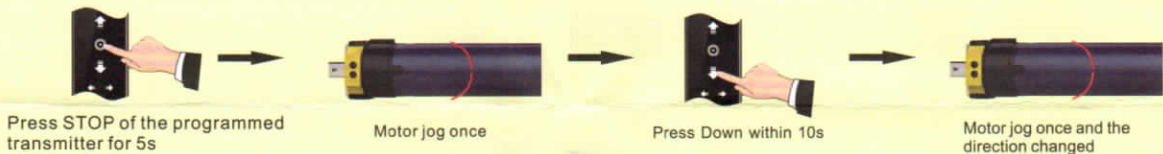
Motor long beep 1s and switch power off

2. Programming



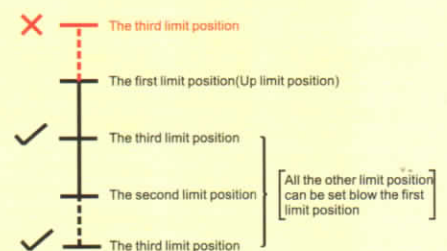
3. Change direction

* In case of the working direction was upside down, then follows below step, otherwise, please skips to limit setting step.

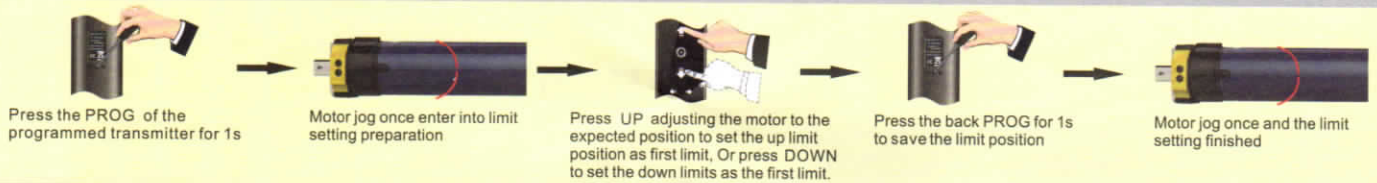


4. Limit position setting

- Maximum six different limit positions can be set, the furthest two positions called the UP and DOWN limit position, others called the middle limit positions;
- When the first limit position is the UP limit position (as right illustration), all other limit positions can only be set below this position; the same thing, when the first limit position is the DOWN limit position, all other limit positions can only be set above this position;
- Every limit position can be fine-tuned or deleted separately (The first limit position can only be fine-tuned but can't be deleted separately. It can be deleted when delete all memories);
- The motor stops at the next limit position after accepting once UP/DOWN order. When it reaches the UP limit position, the UP order is no use any more; when it reaches the DOWN limit position, the DOWN order is no use;
- Press the UP/DOWN button twice on the transmitter at the speed of once a second, motor will go directly to the UP/DOWN limit position without any stop at the middle limit



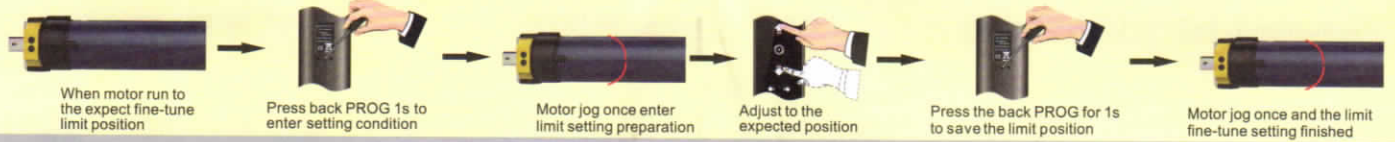
5. First limit position setting (If there's no any action within 30's , the motor will exit from limit position preparation automatically)



6. Other limit position setting * (If there's no any action within 30s , the motor will exit from limit position preparation automatically)



7. Limit position fine-tuning *(If there's no any action within 30s , the motor will exit from limit position preparation automatically)



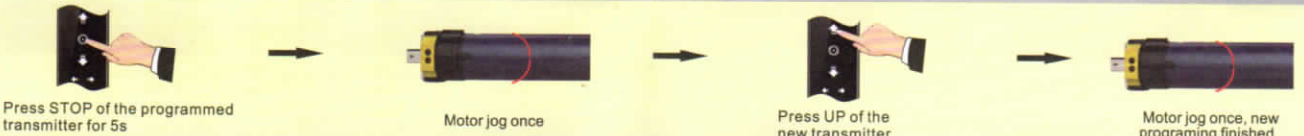
8. Delete the limit position *(The first limit position can't be deleted)



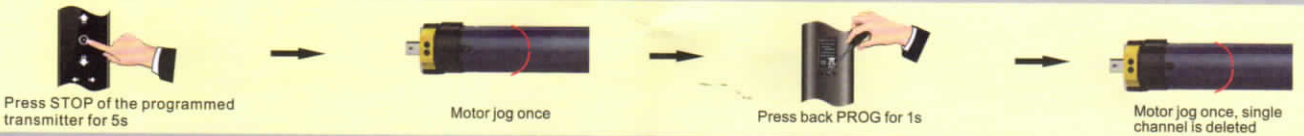
9. Dot move and continuous move conversion



10. Add the new transmitter



11. Delete single channel memory



12. Delete all the memories * After deleting all codes, the motor will be restored to factory setting.



IV. Trouble Shooting

Items	Problem	Matter	Shooting
1	Motor does not run, or run slowly	a. Over-load protection b. Non-proper installation	a. Exchange with proper motor b. Check if proper installed
2	Motor does not run, or run slowly	a. Motor reaches the limit b. Out of battery	a. Normal situation b. Recharge the battery
3	Motor does not run, or run slowly	a. In power off mode b. Out of battery	a. Power on motor b. Recharge the battery